

PAGE 1	INDEX / GENERAL
PAGE 2	HATS
PAGE 3	JACKETS / HOODS
PAGE 4	BOTTOMS - FRONT SIDE
PAGE 5	TOPS
PAGE 6	DRESSES / BOWS / SASHES - FRONT SIDE
PAGE 7	DRESSES / SASHES - BACK SIDE
PAGE 8	DECORATIVE TRIM
PAGE 9	FRINGE
PAGE 10	KNOTS

GENERAL

Please note: this is instructions/guidelines to help ensure safety in all our MINI/ KIDS/ JUNIOR products. Supplier is responsible to make all products compliant with **General Product Safety Directive** and the below standards:

CEN/TR 16792 and Safety of children's clothing - Recommendations for the design and manufacture of children's clothing - Mechanical safety

EN 14682 Safety of children's clothing – Cords and drawstrings on children's clothing – Specifications

Below shall be considered as well:

CEN/TR 17376 Safety of children's clothing - Guidance on to use of EN 14682

Size range for Salling Group:

MINI: from birth to size 98cm

KIDS: from size 98cm to size 134cm

JUNIOR: from size 134cm to size 170cm

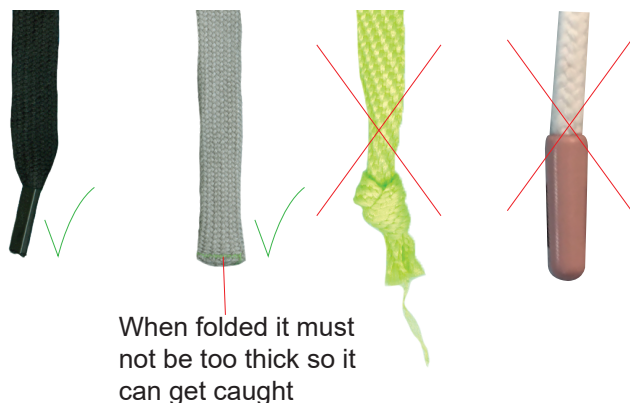
String ends:

String ends must be with a shoelace end or folded so it is not too thick and fastened with

– **must be secured to prevent fraying.**

Never use a knot, pearls or other 3D effects that can cause choking hazard.

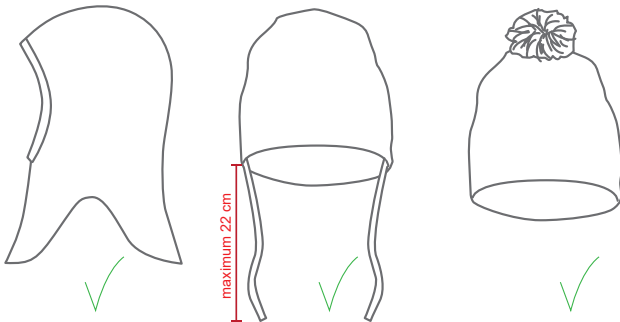
Ends may not ravel so the total length of the string will increase in size.



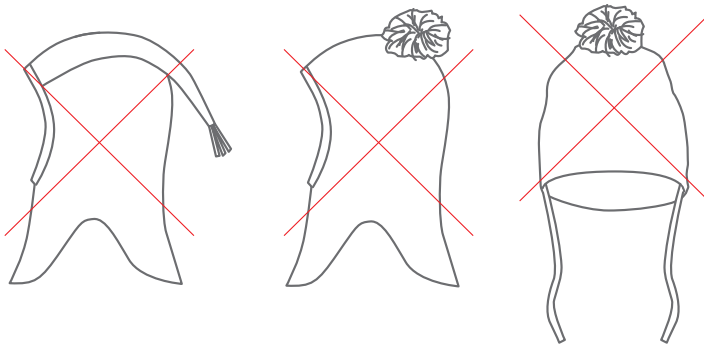
When there is trimmings on the hat that can get caught there must be nothing around the chin

No "3D effects" that can get caught at string ends.

Maximum string length = 22cm



Pompoms to be bigger than 3,2cm in diameter.



Scarfs, tubes and the like – be aware of the following:

Must NOT be loose knitted/ crocheted

Must NOT have hanging frays, pompoms, or the like

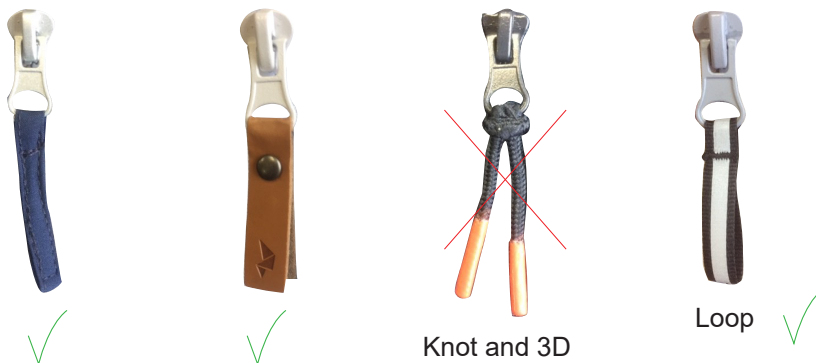
Tubes must NOT be too large, but must fit close to neck when wearing

Zipper puller:

Decorative pullers are allowed if they are no longer than 7,5cm and have no 3D ends.

The pullers must be flat, fully sewn or be with split ends.

Knots or any kind of 3D ends are not allowed. Loop is allowed if circumference is max 7,5cm.



Note: please see page 1 for string ends

Hood Mini and Kids:

Not law - rule for Salling Group.

Hood must be detachable.

If fur trim at edge, the band must be detachable with press buttons or zipper.

No closure under chin.

Hood Junior:

There may be no cords or straps at back or at side of the hood if it's not detachable.

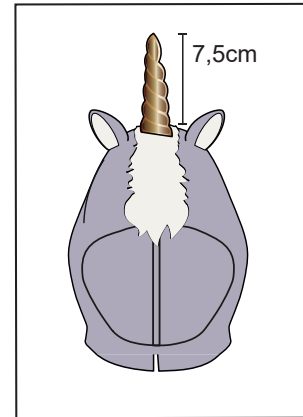
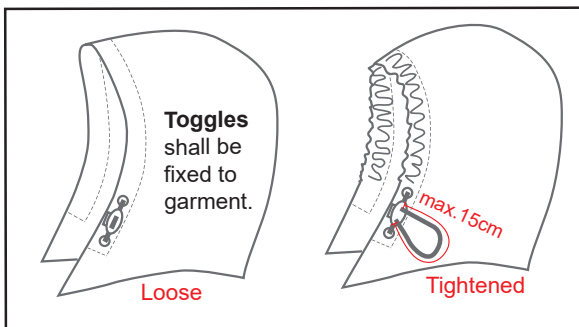
But if it is detachable when you can add strings and straps at max 7,5cm.

Decorated hoods for suits or tops
can have ears or horn etc. if it's made in fabric and not cords.

Max length of 7,5cm

Not able to be tied together.

No 3D ends.



Adjustable strap at sleeve

is ok but must not hang below bottom of sleeve.

This means that the strap must not be too soft/ thin.

Shall lie flat against the garment.

maximum length = 10cm

minimum width = 2cm

Note: please see page 5 for string at hood

Note: please see page 4 for loose belts

Note: please see page 6 for sash / soft belts tied at front

Note: please see page 7 for sash / soft belts tied at back

Adjustable strap at bottom

is ok but must not hang below bottom when it is unfastened.

This means that the strap must not be too soft/ thin.

Shall lie flat against the garment.

Shall have no button, toggle or any 3D shape.

Maximum length = 14cm

minimum width = 2cm

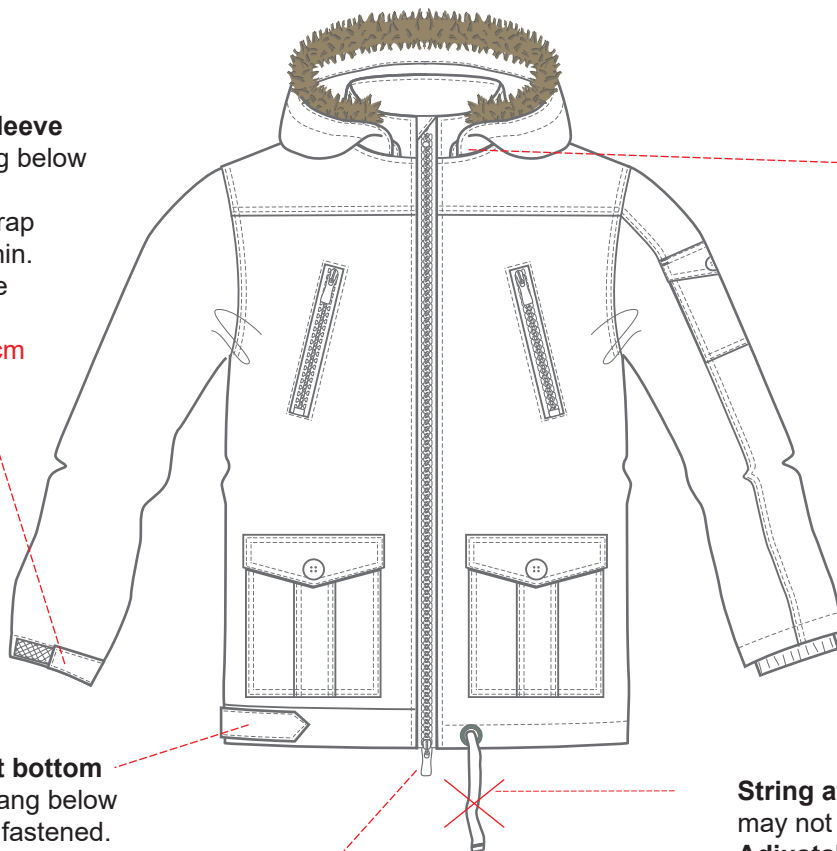
Zipper puller
See page 2

String at bottom

may not hang below hemline.

Adjustable bottom see page 4

is ok but the elastic must never hang below.



BOTTOMS - FRONT SIDE

PAGE 4

SALLING GROUP / SAFETY IN CHILDRENS WEAR

Functional string length for MINI styles: Salling Group rule when cord hang loose from exithole
62+68+74: **10cm**
80+86+92: **12cm**

Functional string length for KIDS and JUNIOR styles: Salling Group rule when cord hang loose from exithole
98+104+110+116: **14cm**
122+128+134+140: **16cm**
146+152+158: **18cm**
164+170: **20cm**

Backside:
Straps: max length 7,5cm
No toggle, buckle or 3D

Functional string length at waist

not elastic.
maximum string length measured from "exithole":
when waist is loose = **20cm**
when waist is tightened to normal use = **28cm**

Decorative string length at waist

not elastic.
maximum string length measured from "exithole":
when waist is loose = **14cm**
when waist is tightened to normal use = **28cm**

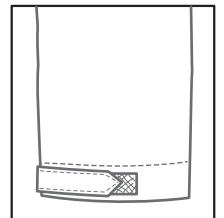
Note: please see page 1 for **string ends**

Zipper at bottom
is ok as long as the zipper puller does not hang below.

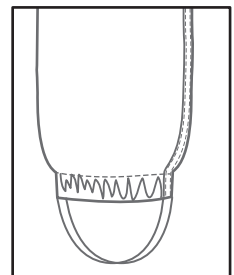
Adjustable waist and string
must be fastened CB

Beltloops
maximum length = **7,5 cm**
must lay flat

Adjustable strap at bottom
is ok but must not hang below bottom when the strap is unfastened.
This means that the strap must not be too soft/ thin.
Shall lie flat to garment.
Maximum length = **14cm**
minimum width = **2cm**



Stirrups
"elastic band to go around foot"
is ok

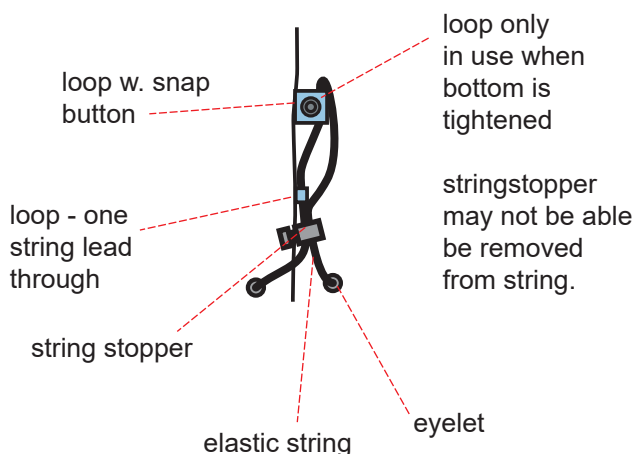


String at bottom
is **not** allowed!
Adjustable bottom
is ok but the elastic must never hang below.

Adjustable bottom must be placed on the inside of the garment

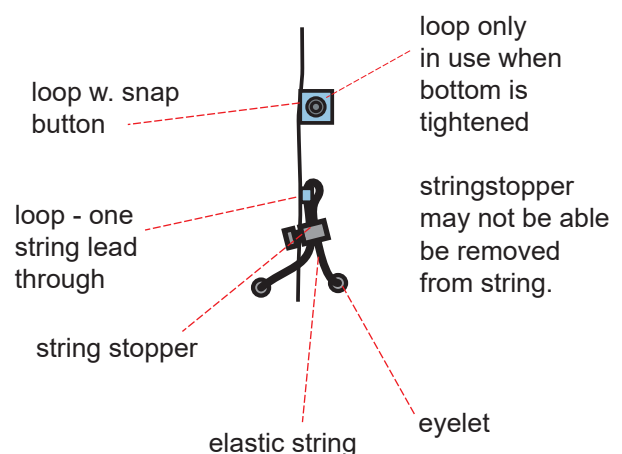
Adjustable bottom:

When bottom is **tightened**



Adjustable bottom:

When bottom is **loose**



String at hood Mini and Kids

no strings!
only fake strings that does
not make a loop

String at hood JUNIOR

Adjustable string. elastic ok.
maximum loop length when
hood is tightened to normal use
= **15cm**

Fake string / string with no function
not elastic
maximum length = **7,5cm**

String length

not elastic.

Strings are allowed on short sleeves
(above elbow)

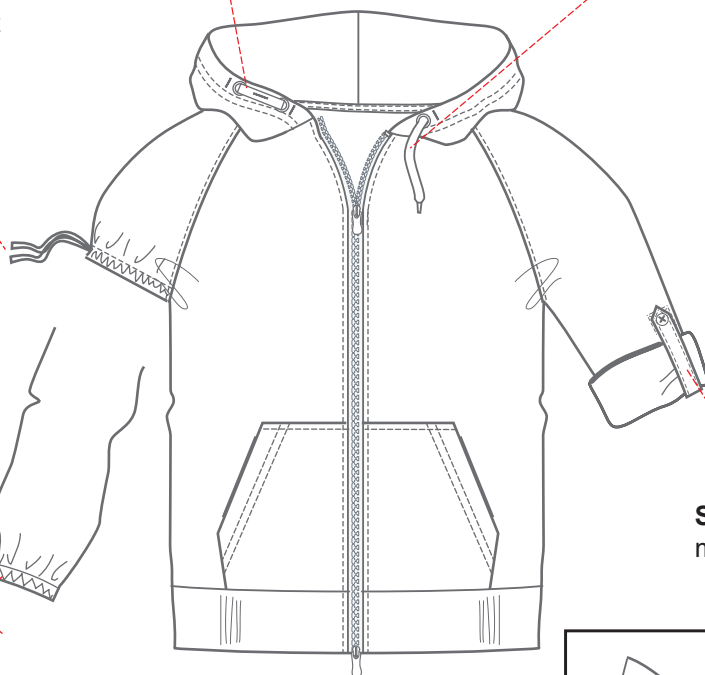
Maximum string length:

MINI / KIDS = **7,5cm**

JUNIOR = **14cm**

No "3D effects" that can get
caught at ends.

No strings at bottom
of long sleeves .



Strap lenght above elbow

KIDS: max **7,5cm**

JUNIOR: max **14cm**

Strap for fold up

maximum length = **14cm**

Zipper puller

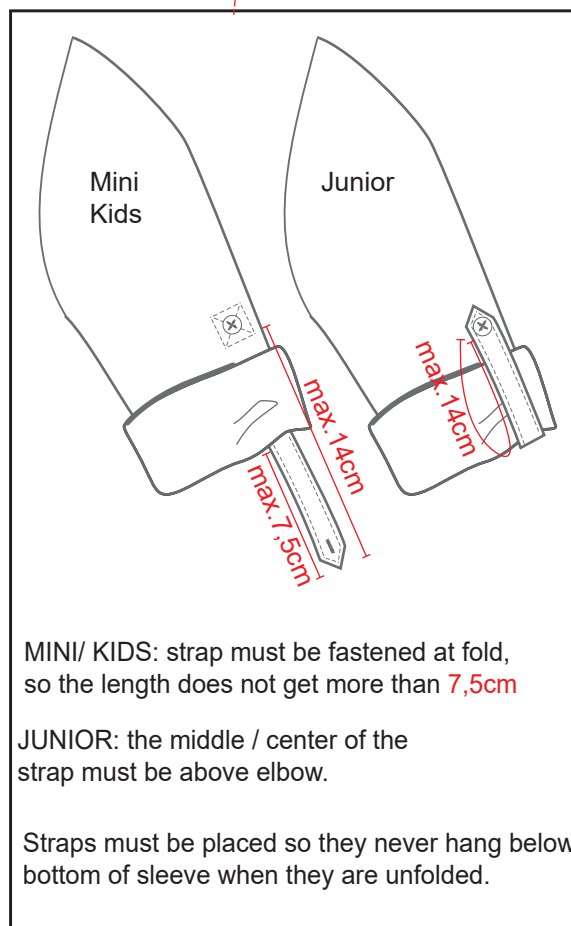
See page 2

Adjustable strap at sleeve

is ok but must not hang below
bottom of sleeve when it is
unbuttoned.

This means that the strap
must not be too soft/ thin.

Maximum length = **10cm**



MINI/ KIDS: strap must be fastened at fold,
so the length does not get more than **7,5cm**

JUNIOR: the middle / center of the
strap must be above elbow.

Straps must be placed so they never hang below
bottom of sleeve when they are unfolded.

Note: please see page 1 for string ends

Halterneck

No tie strings or loose ends are allowed.

Clip fastenings is acceptable.

Adjustment with ring and slider is allowed if the strap and loop lie flat to the body.

Click closure allowed, if it lies flat to body.

Elastic inside is allowed.

Functional bows and strings

with ring and slider

Use of clips or fastening of two

corde is acceptable - only if

there are no free ends of the cord

when garment is worn.

Straps must lie flat to body.

Shoulder straps

Must lie flat to body.

Clip fastening is acceptable.

Elastic allowed.

No tie strings are allowed.

Decorative bows and strings

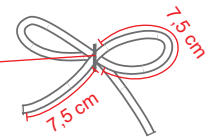
may not be elastic.

maximum string length = 7,5cm

maximum loop length = 7,5cm

no button or buckle on free ends are allowed.

fastened so it is not possible to untighten the bow



Sash / soft belts at front or side of garment

Must be attached with bartack at Center Back.

Width = minimum 3cm

Maximum length measured from where the belt is to be tied = maximum 36cm

Fixed loops

Loops that lie flat to body may be 7,5cm in length. Ex. beltloops.

Loops that go out from body may be 7,5cm in circumference.

Ex. bows.

String length on dresses

not elastic

measured from "exithole"

when waist is loose = 14cm

when waist is tightened to normal use = 28cm

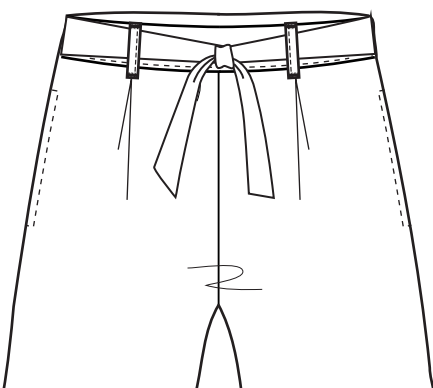
Length is for both functional and decorative cords.

String length

No strings below bottom.

Sash / belts for pants:

Same rules as for dresses. Min. 3cm wide and max 36cm from CF join.

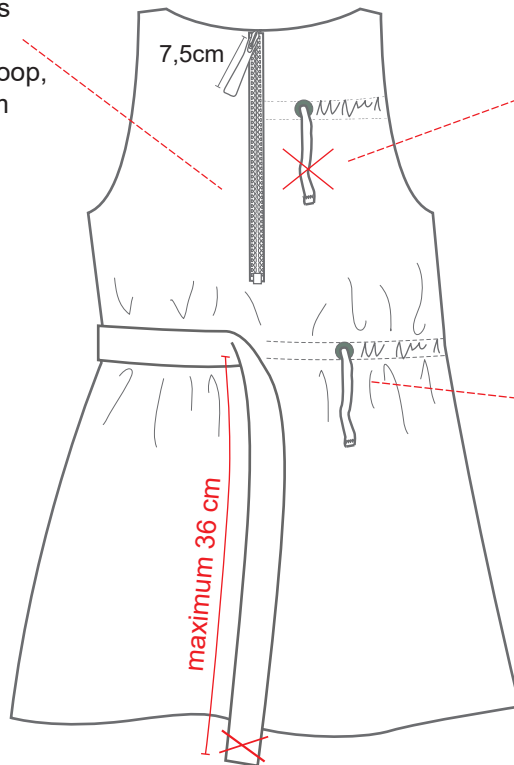


Note: please see page 1 for string ends

MINI, KIDS & JUNIOR

Zipper at CB of dress

Zipperpuller at 7,5cm is allowed on zipper.
If the extra puller has loop, then max girth is 7,5cm



Strings at back of garment

Neck and chest area:
No decorative cords are allowed at the upper chest area / or neck area.

Strings at back of garment

Waist area:
No drawstrings or functional cords may be attached from the back.
Decorative cord is allowed in max length **7,5cm**.
No knots, toggle or 3D ends.

Sash / soft belts at back of garment

Loose belts or attached belts
width = minimum **3cm**
Length from where the belt is to be tied = maximum **36cm**
Length from where the belt hangs loose or where it is tied.
= **must never hang below bottom hem**

USE OF DECORATIVE TRIM FOR SIZE 0 - 98CM

MINI: from **birth** to size **98cm**

Special rules for small children under 3 years because of choking hazard.

At Salling Group size 98cm is the smallest size for the KIDS range, and below rules must be followed for that size.

If it's not possible to follow the rules, then the size 98cm must be removed from the assortment.

SEQUINS / STUDS / BEADS



Must withstand a pull of 50 newton - if max 6mm
Must withstand a pull of 90 newton - if more than 6mm

POMPOMS

Must withstand a pull of 50 newton - soft.
Must withstand a pull of 90 newton - with hard center.

SEQUINS

Never use sequins for MINI styles. (Salling Group rule)

Sequins must be fastened at 3-4 points when used for size 98 or 98/104

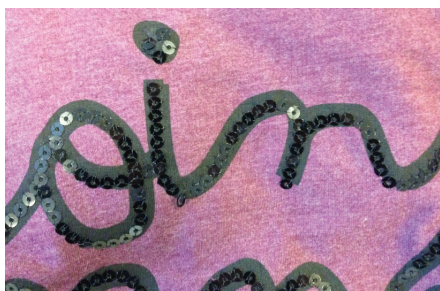
Sequins decorations that are not possible to fasten at 3-4 points must eg be made as glitter/foil/high rubber print for size 98 or 98/104. For knitwear sequins decoration can be made as jaquard knit pattern.

STUDS / BEADS

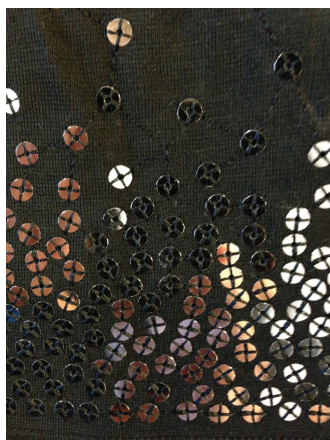
Never use studs/beads for MINI styles. (Salling Group rule)

Studs/beads decorations must eg be made as glitter/foil/high rubber print for size 98 or 98/104.

EXAMPLES OF ALTERNATIVE DECORATION SOLUTIONS:



SEQUINS ON A STRING
FIXED AT 3 POINTS EACH SEQUIN



SEQUINS FIXED AT 4 POINTS
EACH SEQUIN



„SEQUINS“ MADE AS HIGH
RUBBER PRINTING



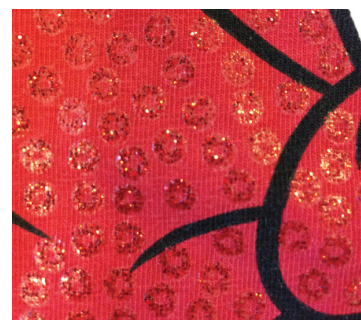
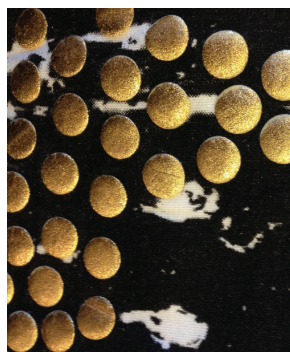
GLITTER PRINTING



SEQUINS ON MESH FASTENED
AT 3 POINTS EACH



„HIGH FOIL“
FOIL WITH RUBBER LAYER UNDERNEATH



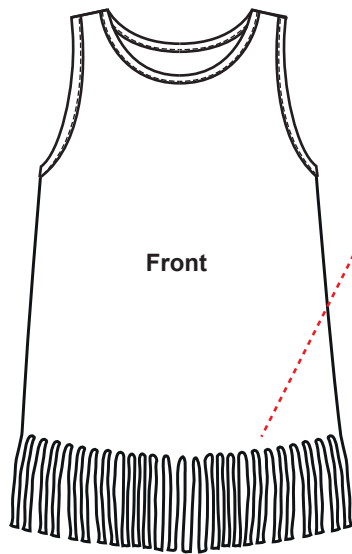
GLITTER PRINTED „SEQUINS“



FOIL PRINTING



FOIL PRINT ON KNIT



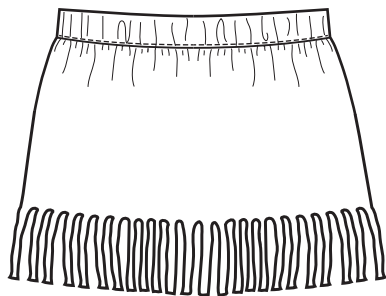
Fringes or frills at front:

No decorative cords are allowed at hemline if the hem ends below the crotch area.
Above crotch 7,5cm is allowed.



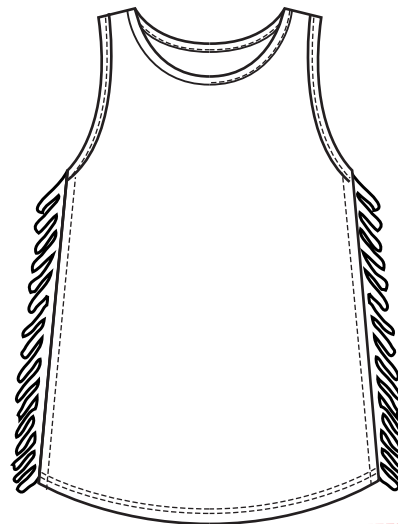
Fringes or frills at back:

Max length at 2cm
May not be able to extend.



Fringes or frills:

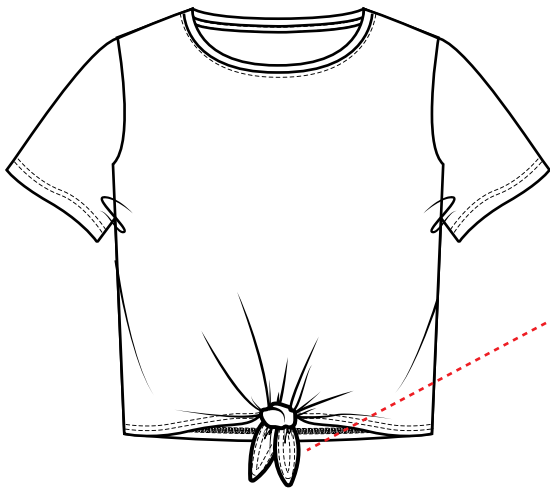
Max length 2cm on skirts and dress hem is allowed.



Fringes or frills at side:

Max length at 2cm is allowed.

Hemline.



Knots at front:

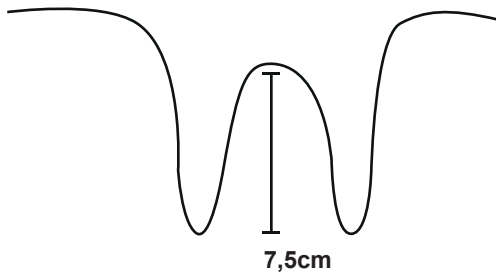
Knots are allowed at hemline if tiestring does not end below crotch.

Tie strings to be as short as possible.

Length of straps to tie:

Max length from valley to tip 7,5cm

Measure as below.



Length front

